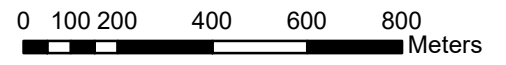


**CAVALLA RUBBER CORPORATION CONCESSION AREA
HCV MAP FOR LAND PREPARATION
MARYLAND COUNTY, REPUBLIC OF LIBERIA**

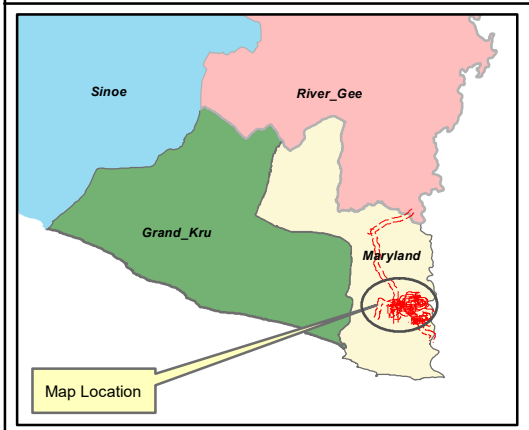


1:16,000



Legend

- Creek Buffer Lines=10.8 KM
- Perennial_Stream
- Community Reserve Land
- Blocks for Land Preparation
- Concession_CRC
- Blocks
- Swamps
- Road



Drawn By	Kouassi JP. KONAN
Checked By	Lawrence S. CLARKE
Date	February 1, 2024